



Government of India
Ministry of Earth Sciences
India Meteorological Department



Press Release

Date: 17th July, 2025

Time of Issue: 1330 hours IST

Subject: i) Under the influence of Depression over southeast Uttar Pradesh, heavy to very heavy rainfall likely to continue over Madhya Pradesh, Uttar Pradesh and Rajasthan during next 2 days with isolated extremely heavy falls over Uttar Pradesh, Madhya Pradesh on 17th and Rajasthan on 18th July.

ii) Heavy to very heavy rainfall likely to continue over Kerala, Karnataka, Tamil Nadu during next 6-7 days with isolated extremely heavy falls over Kerala on 17th, 19th & 20th, Coastal Karnataka on 17th and South Interior Karnataka on 17th & 18th July, 2025.

Realised weather during past 24 hours till 0830 hours IST of today, the 17th July, 2025:

- ❖ **Heavy to extremely heavy falls (≥ 21 cm)** has been recorded at isolated places over Madhya Pradesh, East Uttar Pradesh and Coastal Karnataka.
 - ❖ **Heavy to very heavy rainfall (7-20 cm)** has been recorded at isolated places over Kerala, Tamil Nadu, Uttarakhand, East Rajasthan, Marathwada, Chhattisgarh, Bihar, Jharkhand, Coastal Andhra Pradesh; **Heavy rainfall (7-11 cm)** at isolated places over Himachal Pradesh, Haryana, Goa, Madhya Maharashtra, Sub-Himalayan West Bengal, Odisha, Assam, Mizoram, interior Karnataka, Rayalaseema and Telangana.
- For more details of realised weather, kindly refer [Annexure I](#).**

i. Weather Systems, Forecast and Warnings (refer to [Annexure II & III](#)):

- ❖ The **Monsoon trough** is active and runs near its normal position at mean sea level.
- ❖ Yesterday's well-marked low-pressure area over Northwest Rajasthan moved slowly north-northwestwards and weakened into a low-pressure area over central parts of Pakistan & adjoining northwest Rajasthan at 1730 hrs IST of yesterday and became less marked at 0530 hrs IST of today, 17th July, 2025.
- ❖ Yesterday's well marked low pressure area over southwest Bihar & adjoining east Uttar Pradesh moved west-northwestwards and concentrated into a Depression and lay centred at 0530 hrs IST of today, the 17th, over Southeast Uttar Pradesh, close to Prayagraj. It moved slowly west-northwestwards with a speed of 3 kmph during past 3 hours and lay centred at 0830 hrs IST of today, the 17th July, 2025, over the same region, 40 km southwest of Prayagraj, 100 km northeast of Satna, 120 km east-southeast of Banda and 160 km east of Khajuraho. It is likely to move west-northwestwards across south Uttar Pradesh and adjoining north Madhya Pradesh during next 2 days.
- ❖ A **Western Disturbance** as a trough in middle tropospheric levels runs roughly along Long. 70°E to the north of Lat. 30°N.
- ❖ An **upper air cyclonic circulation** lies over central parts of Pakistan in lower tropospheric levels.
- ❖ An **east-west trough** runs roughly along Lat. 10°N in middle tropospheric levels.
- ❖ An **upper air cyclonic circulation** lies over North Interior Karnataka and neighbourhood in lower tropospheric levels.

Under the influence of these systems, the following weather is likely:

Northwest India:

- ✓ **Extremely heavy rainfall (≥ 21 cm)** very likely at isolated places over Uttar Pradesh on 17th and Rajasthan on 18th July.
- ✓ Isolated **heavy rainfall** likely over Jammu & Kashmir, Himachal Pradesh, Uttarakhand, East Uttar Pradesh during 17th-23rd; Punjab, Haryana on 17th, during 21st-23rd; Rajasthan during 17th-19th July with **very heavy rainfall over Uttarakhand on 17th and during 20th-23rd; West Uttar Pradesh on 18th, 20th & 21st; East Rajasthan on 17th and Himachal Pradesh during 21st-23rd July.**

- ✓ Light/moderate rainfall at most/many places accompanied with thunderstorm, lightning likely over western Himalayan region and some/many places over the plains during next 7 days.

South Peninsular India:

- ✓ **Extremely heavy rainfall (≥ 21 cm)** very likely at isolated places over Kerala on 17th, 19th & 20th; Coastal Karnataka on 17th and South Interior Karnataka on 17th & 18th July.
- ✓ Isolated **heavy to very heavy rainfall** likely over Kerala & Mahe, Tamil Nadu, Coastal and South Interior Karnataka during 17th-23rd; isolated **heavy rainfall** over Coastal Andhra Pradesh & Yanam, north Interior Karnataka during 17th-23rd; Lakshadweep on 19th & 20th; Rayalaseema and Telangana during 17th-19th July.
- ✓ **Strong surface winds** (speed reaching 40-50 kmph) very likely over South Peninsular India during next 5 days.
- ✓ Light/moderate rainfall at many/some places over Kerala & Mahe, Lakshadweep, Karnataka, Rayalaseema; isolated to scattered rainfall over Coastal Andhra Pradesh & Yanam, Telangana during next 7 days.

East & Central India:

- ✓ **Extremely heavy rainfall (≥ 21 cm)** very likely at isolated places over Madhya Pradesh on 17th July.
- ✓ Isolated **heavy rainfall** very likely to continue over Madhya Pradesh on 17th, 18th and during 21st-23rd; Vidarbha, Chhattisgarh during 21st -23rd; Bihar on 17th, during 20th-23rd; Andaman & Nicobar Islands on 17th; Sub-Himalayan West Bengal & Sikkim, Odisha during 19th-23rd July **with very heavy rainfall over West Madhya Pradesh on 18th and Sub-Himalayan West Bengal & Sikkim on 20th July.**
- ✓ Light/moderate rainfall at most/many places accompanied with thunderstorm & lightning likely over the region during next 7 days.

West India:

- ✓ **Heavy rainfall** likely at isolated places over Konkan & Goa during 17th-23rd; Ghat areas of Madhya Maharashtra during 20th-23rd; Marathwada on 17th July.
- ✓ Light/moderate rainfall at many/some places very likely over the region during next 5 days.

Northeast India:

- ✓ Light/moderate rainfall at many places accompanied with **thunderstorm, lightning** likely to continue over Northeast India during next 7 days.
- ✓ Isolated **heavy rainfall** very likely over Arunachal Pradesh, Assam & Meghalaya, Nagaland & Tripura during 17th-22nd with very heavy rainfall over Meghalaya on 19th July.

Fishermen Warnings:

Fishermen are advised to avoid venturing into the following from 17th July to 22nd July 2025 to the following Areas:

Arabian Sea: Along and off the Kerala, Karnataka coasts, over Lakshadweep, Maldives, Comorin areas; Along and off the Somalia coast and adjoining sea areas, Oman and adjoining Yemen coast & adjoining sea areas; most parts of central Arabian Sea and adjoining south and north Arabian Sea for 17th to 22nd July.

Bay of Bengal:

Few parts of south Bay of Bengal for 17th July; many parts of south Bay of Bengal for 18th & 19th July; most parts of south Bay of Bengal and adjoining central Bay of Bengal for 20th July, most parts of south & central Bay of Bengal, off Tamil Nadu and Andhra Pradesh coasts on 21st July; over Gulf of Mannar for 17th to 22nd July and over Andaman Sea for 18th to 22nd July.

Total suspension of fishing operations is suggested over above mentioned areas and dates.

ii. Weather conditions and forecast over Delhi/NCR during 17th to 20th July, 2025 (Annexure IV)

For more details, kindly refer National Weather Bulletin:

https://mausam.imd.gov.in/responsive/all_india_forecast_bulletin.php

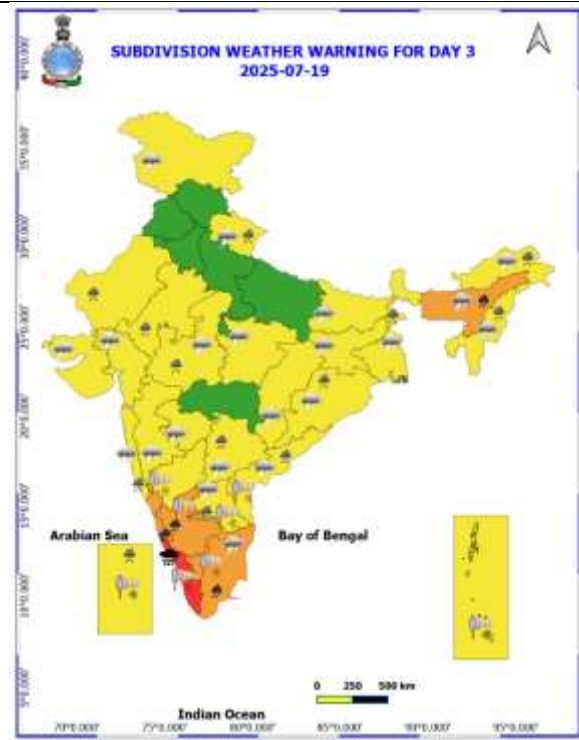
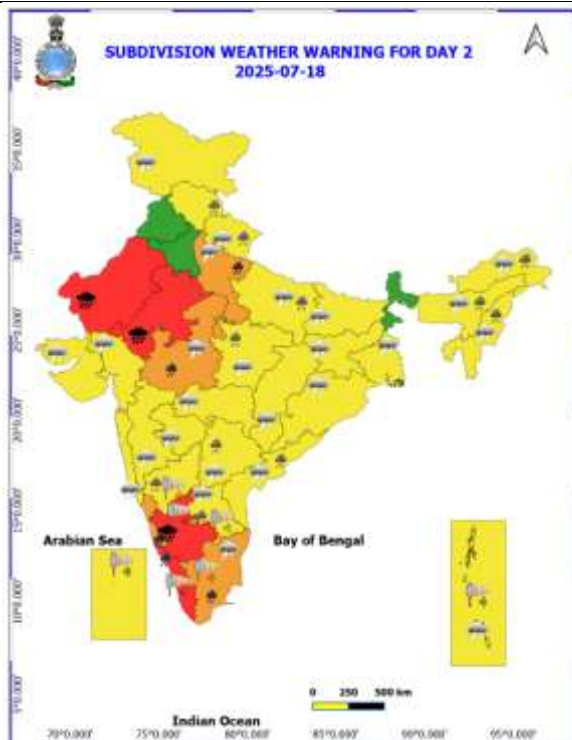
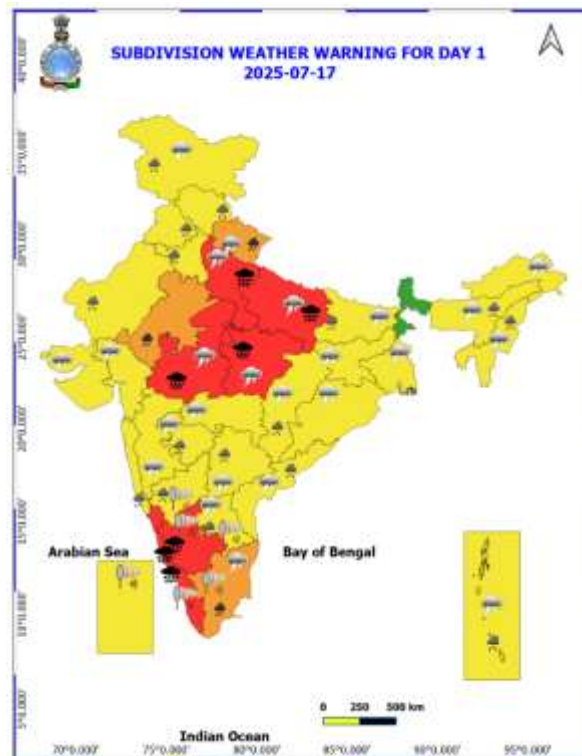
For District wise warnings refer: <https://mausam.imd.gov.in/responsive/districtWiseWarningGIS.php>

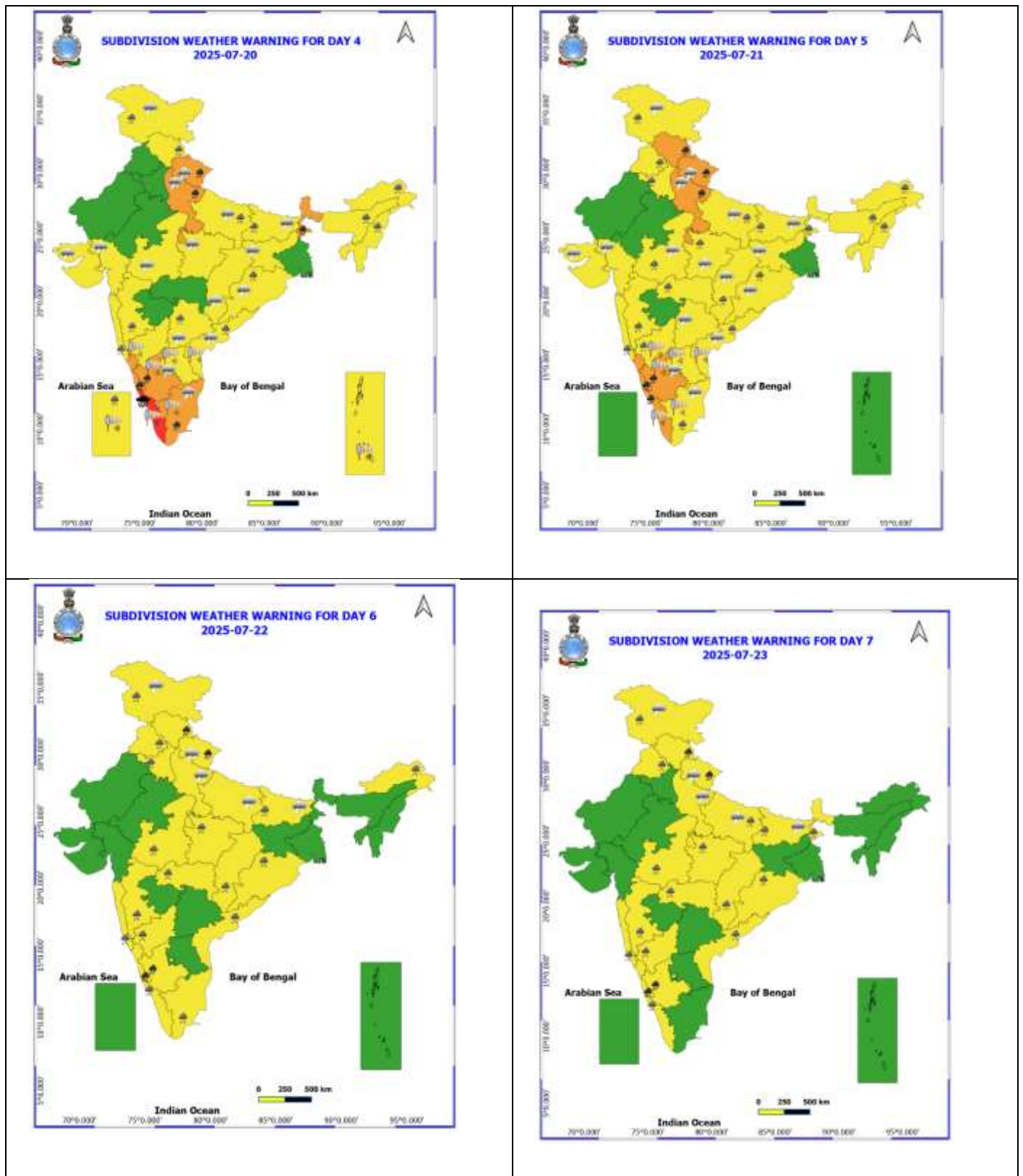
Rainfall recorded (in cm) during past 24 hours till 0830 hours IST of today, the 17th July:

- ❖ **Coastal Karnataka:** Mulki (dist Dakshina Kannada) 30; Mangaluru AP (dist Dakshina Kannada), Shakti Nagar (dist Dakshina Kannada) 21 Each; Mani (dist Dakshina Kannada) 19; Manki (dist Uttara Kannada) 18; Mangaluru (dist Dakshina Kannada) 17; Sulya (dist Dakshina Kannada) 16; Puttur HMS (dist Dakshina Kannada) 15; Bantwal (dist Dakshina Kannada), Kota (dist Udupi) 14 Each; Karwar (dist Uttara Kannada) 12; Udupi (dist Udupi) 11;
- ❖ **East Madhya Pradesh:** Naigarhi (dist Rewa) 25; Mauganj (dist Rewa) 22; Hanumana (dist Rewa) 21; Bahri (dist Sidhi) 20; Chitrangi (dist Singrauli) 15; Dindori-aws (dist Dindori), Semariya (dist Rewa) 13 Each; Beohari (dist Shahdol), Kusmi (dist Sidhi), Majhauri (dist Sidhi), Sihawal (dist Sidhi), Raipurkarchuliyan (dist Rewa), Huzur (dist Rewa) 12 Each; Shahpura (dist Dindori), Rampur (dist Sidhi), Mangawan (dist Rewa) 11 Each;
- ❖ **East Uttar Pradesh:** Chunar (dist Mirzapur) 24; Meja (dist Prayagraj) 21; Jaunpur Tehsil (dist Jaunpur) 14; Mirzapur CWC (dist Mirzapur) 11; Ghorawal (dist Sonbhadra), Rihand Dam Fmo (dist Sonbhadra), Churk (dist Sonbhadra) 10 Each; Varanasi/Bab AP (dist Varanasi), Varanasi BHU (dist Varanasi) 9 Each; Koraon (dist Prayagraj) 8; Prayagraj Sadar (dist Prayagraj), Karchhana (dist Prayagraj) 7 Each;
- ❖ **West Madhya Pradesh:** Bhanpura (dist Mandsaur) 21; Timarni (dist Harda), Narwar (dist Shivpuri) 8 Each; Harda (dist Harda), Karera (dist Shivpuri), Rahatgaon (dist Harda) 7 Each;
- ❖ **EAST RAJASTHAN:** Ramganj mandi (Kota) 19, Sarmathura (Dholpur) 9, Asnawar (Jhalawar) 8,
- ❖ **Kerala & Mahe:** Hosdurg (dist Kasargod) 18; Irikkur (dist Cannur), Cheruvanchery AWS (dist Cannur), Peringome AWS (dist Cannur) 17 Each; Taliparamba (dist Cannur) 16; Kudulu (dist Kasargod), Padannakkad AWS (dist Kasargod), Bayar AWS (dist Kasargod) 15 Each; Padinjarathara Dam AWS (dist Wynad), Chemberi AWS (dist Cannur) 14 Each; Tellichery (dist Cannur) 13; Kannur Airport AWS (dist Cannur), Aralam AWS (dist Cannur), Ams Kannur (dist Cannur) 12 Each; Kannur (dist Cannur), Kannur Icar AWS (dist Cannur), Panathur AWS (dist Kasargod), Muliya AWS (dist Kasargod), Kalpeta AWS (dist Wynad) 11 Each; Vytiri (dist Wynad), Ambalavayal (dist Wynad) 10 Each;
- ❖ **Uttarakhand:** Hardwar (dist Hardwar) 17; Pantnagar (dist Udham Singh Nagar) 10; Mussoorie (dist Dehradun) 8;
- ❖ **Bihar:** Rampur (dist Bhabua), Bhagwanpur (dist Bhabua) 16 Each; Raghupur (dist Vaishali) 14; Nauhatta (dist Rohtas) 13; Sasaram (dist Rohtas), Mahanar (dist Vaishali), Sahdei Buzurg (dist Vaishali) 12 Each; Sheosagar (dist Rohtas) 11;
- ❖ **Jharkhand:** Hunterganj (dist Chatra) 13; Borio (dist Sahibganj) 11; Dhurki (dist Garhwa), Sujani Kvk AWS (dist Deoghar), Japla (dist Palamu) 7 Each;
- ❖ **Marathwada:** Selu (dist Parbhani) 13; Ghansawangi (dist Jalna), Washi (dist Dharashiv), Renapur (dist Latur), Mantha (dist Jalna) 7 Each;
- ❖ **Tamil Nadu:** Avalanche (dist Nilgiris) 12; Chinnakalar (dist Coimbatore) 11; Tiruttani (dist Tiruvallur) 9; Naduvattam (dist Nilgiris), Cincona (dist Coimbatore), Worth Estate Cher (dist Nilgiris) 8 Each; G Bazar (dist Nilgiris), Valparai PTO (dist Coimbatore), Tiruttani PTO (dist Tiruvallur), Upasi Tea Research AWS (dist Coimbatore), Barwood (dist Nilgiris), Taluk Office Pandalur (dist Nilgiris) 7 Each;
- ❖ **Coastal Andhra Pradesh & Yanam:** Srungavarapukota (dist Vizianagaram) 12;
- ❖ **Chhattisgarh:** Janakpur Bharatpur (dist Manendragarh Bharatpur) 12; Pondi Bachra (dist Koriya) 11; Kotadol (dist Manendragarh Bharatpur) 10; Surajpur (dist Surajpur) 9; Kelhari (dist Manendragarh Bharatpur) 8; Kusmi (dist Balrampur), Doura Kochali (dist Balrampur), Latori (dist Surajpur), **Biharpur** (dist Surajpur) 7 Each;
- ❖ **Assam & Meghalaya:** Silchar (dist Cachar) 11;
- ❖ **South Interior Karnataka:** Bhagamandala (dist Kodagu) 11; Agumbe AWS (dist Shivamogga) 8; **Royalaseema:** Pakala (dist Tirupati), Chittoor (dist Chittoor) 10 Each;
- ❖ **Sub Himalayan West Bengal & Sikkim:** Toorsa Tea Garden (dist Alipurduar) 10; Anandpur Tea Estate (dist Jalpaiguri) 8; Kailashpur Tea Estate (dist Jalpaiguri), Moraghat Tea Estate (dist Jalpaiguri), Beech Tea Garden (dist Alipurduar) 7 Each;
- ❖ **North Interior Karnataka:** Hunsagi (dist Yadgir) 9;
- ❖ **Konkan & Goa:** Sanguem (dist South Goa) 9;
- ❖ **Odisha:** Jagannath Prasad (dist Ganjam) 7;
- ❖ **Himachal Pradesh:** Nahan (dist Sirmaur) 7;
- ❖ **Haryana:** Sadhaura (dist Yamuna Nagar) 7.

Table-1								
7 Days Rainfall Forecast								
S.No.	Subdivision	17- Jul	18- Jul	19- Jul	20- Jul	21- Jul	22- Jul	23- Jul
		Day 1	Day 2	Day 3	Day 4	Day 5	Day 6	Day 7
1	ANDAMAN & NICOBAR ISLANDS	FWS	FWS	WS	WS	WS	WS	FWS
2	ARUNACHAL PRADESH	SCT	FWS	FWS	FWS	FWS	FWS	SCT
3	ASSAM & MEHGHALAYA	FWS	SCT	FWS	FWS	FWS	FWS	SCT
4	NAGALAND, MANIPUR, MIZORAM AND TRIPURA	FWS	FWS	FWS	FWS	FWS	FWS	SCT
5	SUB HIMALAYAN WEST BENGAL & SIKKIM	WS	FWS	FWS	WS	WS	WS	WS
6	GANGETIC WEST BENGAL	SCT	SCT	FWS	FWS	SCT	SCT	FWS
7	ODISHA	SCT	SCT	FWS	FWS	FWS	FWS	FWS
8	JHARKHAND	FWS	SCT	SCT	SCT	SCT	FWS	FWS
9	BIHAR	SCT	ISOL	ISOL	SCT	SCT	SCT	SCT
10	EAST UTTAR PRADESH	WS	SCT	ISOL	SCT	SCT	SCT	SCT
11	WEST UTTAR PRADESH	FWS	FWS	SCT	FWS	FWS	SCT	SCT
12	UTTARAKHAND	WS	FWS	FWS	WS	WS	WS	WS
13	HARYANA, CHANDIGARH & DELHI	FWS	SCT	SCT	ISOL	FWS	FWS	SCT
14	PUNJAB	FWS	SCT	ISOL	ISOL	FWS	FWS	ISOL
15	HIMACHAL PRADESH	WS	WS	FWS	FWS	WS	WS	WS
16	JAMMU AND KASHMIR AND LADAKH	WS	FWS	FWS	FWS	WS	WS	WS
17	WEST RAJASTHAN	SCT	FWS	ISOL	ISOL	ISOL	ISOL	ISOL
18	EAST RAJASTHAN	WS	WS	FWS	SCT	SCT	ISOL	ISOL
19	WEST MADHYA PRADESH	WS	WS	FWS	SCT	SCT	FWS	FWS
20	EAST MADHYA PRADESH	WS	WS	FWS	FWS	FWS	FWS	FWS
21	GUJRAT REGION	SCT	SCT	SCT	SCT	ISOL	SCT	SCT
22	SAURASHTRA & KUTCH	ISOL	SCT	SCT	SCT	ISOL	ISOL	ISOL
23	KONKAN & GOA	FWS	FWS	FWS	WS	WS	WS	WS
24	MADHYA MAHARASHTRA	SCT	SCT	SCT	SCT	SCT	SCT	SCT
25	MARATHWADA	SCT	ISOL	ISOL	ISOL	ISOL	ISOL	ISOL
26	VIDARBHA	FWS	FWS	SCT	SCT	FWS	FWS	FWS
27	CHHATTISGARH	FWS	SCT	SCT	SCT	FWS	FWS	FWS
28	COASTAL ANDHRA PRADESH	ISOL	SCT	FWS	FWS	FWS	SCT	SCT
29	TELANGANA	ISOL	FWS	FWS	SCT	SCT	SCT	SCT
30	RAYALASEEMA	ISOL	SCT	FWS	FWS	FWS	SCT	SCT
31	TAMILNADU & PUDUCHERRY	SCT	SCT	SCT	SCT	SCT	SCT	SCT
32	COSTAL KARNATAKA	WS	WS	WS	WS	WS	WS	WS
33	NORTH INTERIOR KARNATAKA	FWS	WS	WS	FWS	FWS	FWS	FWS
34	SOUTH INTERIOR KARNATAKA	FWS	WS	WS	WS	WS	WS	WS
35	KERALA AND MAHE	WS	WS	WS	WS	WS	WS	WS
36	LAKSHADWEEP	WS	WS	WS	WS	WS	WS	WS

- As the lead period increases forecast accuracy decrease.





- Action may be taken based on ORANGE AND REDCOLOUR warnings.
- Vulnerable regions likely urban and hilly areas action may be initiated for heavy rainfall warning.
- As the lead period increases forecast accuracy decreases.

Detailed districtwise Multi Hazard weather warning for next five days available at <https://mausam.imd.gov.in/responsive/districtWiseWarningGIS.php>

Weather forecast over Delhi/NCR during 17th to 20th July 2025**Past Weather:**

There has been fall in the minimum temperature up to 1°C and no significance changes in maximum temperature over Delhi/NCR during the past 24 hours. The maximum and minimum temperatures over Delhi were around 33 to 34°C and 24 to 26°C respectively. The minimum temperature was below normal up to 1 to 2°C and the maximum temperature was below normal up to 1 to 2°C. Generally cloudy sky conditions with predominant surface wind from the southeast direction with wind speeds up to 16 kmph with gusting to 30 kmph prevailed during the past 24 hours. Very light to light rainfall has been recorded in most places with isolated places of moderate rainfall over Delhi. Generally cloudy sky conditions with a windspeed of less than 18 kmph from the southeast direction prevailed over the region in the forenoon today.

Weather Forecast:

17.07.2025: Generally cloudy sky. Very light to light rain accompanied with thunderstorms/lightning. The maximum temperatures over Delhi are likely to be in the range of 32 to 34°C. The maximum temperature will be below normal up to 1 to 2°C. The predominant surface wind will likely be from the southeast direction with a wind speed of less than 15 kmph in the afternoon. The wind speed will gradually decrease becoming 10-12 kmph from the southeast direction during evening and night.

18.07.2025: Generally cloudy sky. Light to moderate rain accompanied with thunderstorms/lightning. Occasionally strong surface winds 20- 30 kmph gusting to 40 kmph. The maximum and minimum temperatures over Delhi are likely to be in the range of 32 to 34°C and 24 to 26°C respectively. The minimum temperature will be below normal up to 1 to 2°C, and the maximum temperature will be below normal up to 1 to 2°C. The predominant surface wind will likely be from the southeast direction with a wind speed of less than 15 kmph during the morning hours. The wind speed will gradually increase becoming less than 25 kmph from the east direction in the afternoon. It will decrease becoming less than 20 kmph from the southeast direction during the evening and night.

19.07.2025: Partly cloudy sky. Very light to light rain accompanied with thunderstorms/lightning. The maximum and minimum temperatures over Delhi are likely to be in the range of 34 to 36°C and 24 to 26°C respectively. The minimum temperature will be below normal up to 1 to 2°C, and the maximum temperature will be near normal. The predominant surface wind will likely be from the southeast direction with a wind speed of less than 12 kmph during the morning hours. The wind speed will gradually increase becoming less than 15 kmph from the southeast direction in the afternoon. It will decrease becoming less than 10 kmph from the southeast direction during the evening and night.

20.07.2025: Partly cloudy sky. Very light to light rain accompanied with thunderstorms/lightning. The maximum and minimum temperatures over Delhi are likely to be in the range of 34 to 36°C and 25 to 27°C respectively. The minimum temperature will be below normal up to 1 to 2°C and the maximum temperature will be near normal. The predominant surface wind will likely be from the northwest direction with a wind speed of less than 12 kmph during the morning hours. The wind speed will gradually increase becoming less than 15 kmph from the west direction in the afternoon. It will increase becoming less than 20 kmph from the west direction during the evening and night.

Impact expected and Action Suggested due to light rainfall with thunderstorm/lightning:

- Be cautious and take precautionary measures, though there is the likelihood of thunderstorms/lightning.
- Damage to standing crops, Minor to major damage to power and communication lines due to breaking of branches, Partial damage to vulnerable structures due to strong winds, Loose objects may fly.
- People are advised to keep a watch on the weather for worsening conditions and be ready to move to safer places accordingly, stay indoors, close windows & doors and avoid travel if possible, take safe shelters; do not take shelter under trees, do not lie on concrete floors and do not lean against concrete walls, unplug electrical/ electronic appliances, immediately get out of water bodies, keep away from all the objects that conduct electricity.

Impact & Action Suggested

- ✓ **Extremely heavy rainfall (≥ 21 cm)** very likely at isolated places over Uttar Pradesh, Madhya Pradesh on 17th; Rajasthan on 18th; Kerala on 17th, 19th & 20th; Coastal Karnataka on 17th and South Interior Karnataka on 17th & 18th July.
- ✓ **Very heavy rainfall over** Uttarakhand on 17th and during 20th-23rd; West Uttar Pradesh on 18th, 20th & 21st; East Rajasthan on 17th; Himachal Pradesh during 21st-23rd; Kerala & Mahe, Tamil Nadu, Coastal and South Interior Karnataka during 17th-23rd; West Madhya Pradesh on 18th and Sub-Himalayan West Bengal & Sikkim on 20th July.

Impact Expected

- Localized Flooding of roads, water logging in low lying areas and closure of underpasses mainly in urban areas of **(Rajasthan and West Madhya Pradesh)** the above region.
- Occasional reduction in visibility due to heavy rainfall.
- Disruption of traffic in major cities due to water logging in roads leading to increased travel time.
- Minor damage to kutch roads.
- Possibilities of damage to vulnerable structure.
- Localized Landslides/Mudslides/landslips/mudslips/landsinks/mudsinks.
- Damage to horticulture and standing crops in some areas due to inundation.
- It may lead to riverine flooding in some river catchments (for riverine flooding please visit Web page of CWC)

Action Suggested

- Check for traffic congestion on your route before leaving for your destination.
- Follow any traffic advisories that are issued in this regard.
- Avoid going to areas that face the water logging problems often.
- Avoid staying in vulnerable structure.

Agromet advisories for likely impact of Heavy / Heavy to Very Heavy Rainfall

- In **Madhya Pradesh**, ensure proper drainage from standing crops. Postpone transplanting of rice and mango and sowing of pearl millet, soybean and vegetables in **Gird Zone**. Postpone transplanting of rice and sowing of maize and vegetables in **Kymore Plateau & Satpura Hills Zone**. Postpone sowing of soybean and sorghum in **Malwa Plateau Zone** and vegetables and horticultural crops in **Bundelkhand Zone**.
- In **Rajasthan**, postpone sowing of maize, soybean, green gram, black gram and groundnut and ensure drainage in standing crops in **Sub Humid Southern Plain and Aravali Hill Zone**. Postpone sowing of soybean, black gram, green gram, sesame and maize and provide adequate drainage in standing crops in **Southeastern Humid Plain Zone**. Make provision to drain out excess water from fields of pearl millet, sesame, black gram and vegetables in **Flood Prone Eastern Plain Zone** and pearl millet and groundnut fields in **Semi Arid Eastern Plain Zone**.
- In **South Uttar Pradesh**, drain out excess water from standing crops. Postpone transplanting of rice and sowing of green gram, black gram, groundnut and sesame in **Bundelkhand Zone**. Postpone transplanting of paddy and sowing of maize, pigeon pea, millet, black gram, green gram, groundnut and vegetables in **Vindhyan Zone**. Postpone sowing of maize, sorghum, pigeon pea, green gram, black gram and vegetables in **Eastern Plain Zone**.
- In **Uttarakhand**, ensure proper drainage facilities in soybean, maize, barnyard millet, finger millet, pigeon pea, kidney beans, vegetables and orchards. Harvest matured vegetables and fruits and store in safe place.
- In **Chhattisgarh**, make arrangements for drainage of excess water from fields of rice, maize, pigeon pea, minor millets and vegetables. Provide mechanical support to tall/weak crops with stakes or bamboo to prevent lodging or breakage.
- In **Bihar**, do not allow rain water to stagnate in fields of maize, ragi, kodo, Sava, and vegetables in **North East Alluvial Zone** and ensure proper drainage in maize and vegetable crops in low-lying areas of **South Bihar Alluvial Zone**.
- In **Coastal Karnataka**, drain out excess water from rice nurseries, transplanted rice fields and plantations of arecanut and coconut in **Coastal Zone** and from rice nurseries and fields of maize, cotton and ginger and plantations of arecanut in **Hill Zone**. In **South Interior Karnataka**, make necessary arrangements to drain out excess water from fields of paddy, maize, black gram, green gram, field bean, cowpea, sugarcane, vegetables, ginger and plantations of coffee, pepper, cardamom, arecanut and banana in **Southern Dry Zone** and rice nurseries, fields of paddy, finger millet, maize and plantations of arecanut and black pepper in **Southern Transition Zone**.
- In **Kerala**, ensure proper drainage facilities in rice nurseries, transplanted rice fields, coconut and banana plantations to prevent water logging. Undertake propping in banana to protect the plants from heavy rains.
- In **Tamil Nadu**, ensure proper drainage facilities in rice nurseries, cotton, sugarcane, groundnut and transplanted rice fields, coconut and banana plantations to prevent water logging. Provide staking or support to tender plants of cotton, young plants of sugarcane and fruit-bearing plants of banana to avoid lodging.

Livestock / Fishery

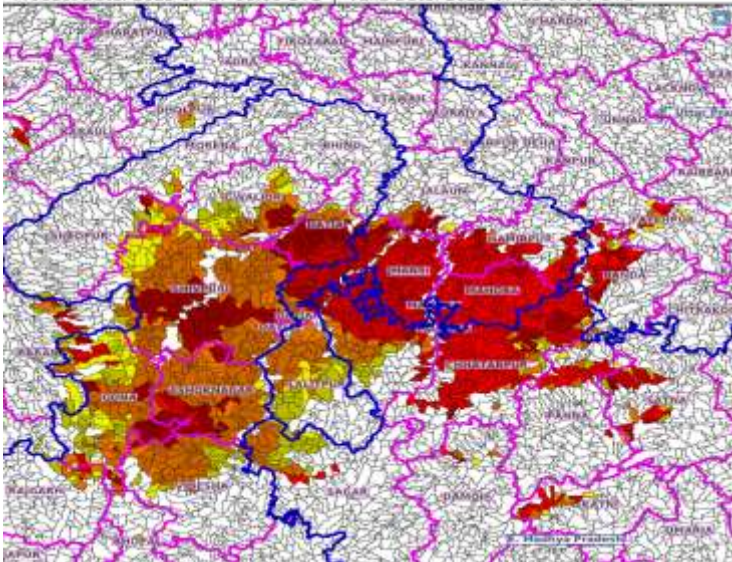
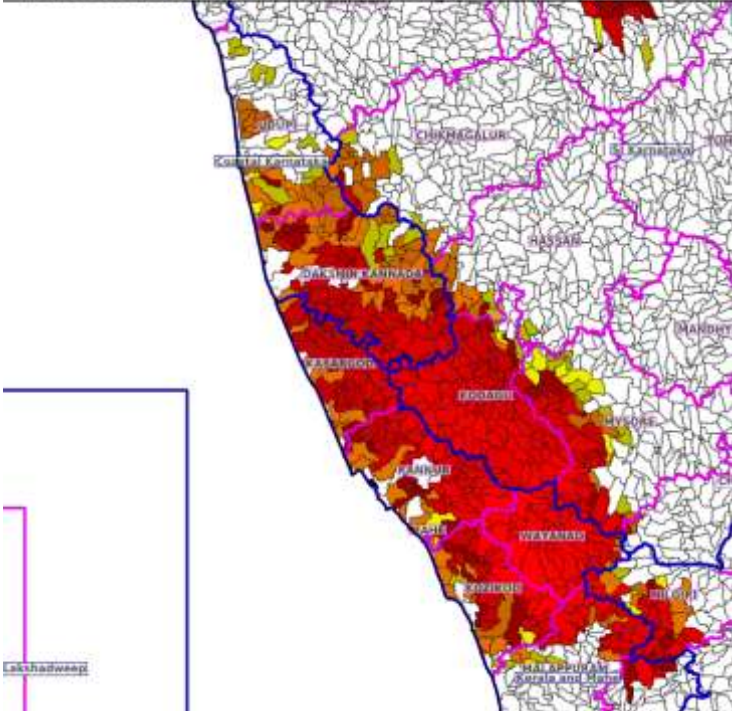
- Keep the animals inside the shed during heavy rainfall and provide them balanced feed.
- Store feed and fodder in a safe place to prevent spoilage.
- Construct an outlet with proper netting around the ponds to drain out excess water, thereby preventing fish from escaping in case of overflow.

Agromet advisories for likely impact of Thunderstorm / Gusty Winds / Squally Winds

(Based on the IBF and advisories issued by different AMFUs)

- Provide mechanical support to horticultural crops and staking or support to vegetables and young fruit plants / fruit-bearing plants to avoid lodging due to strong winds.

Flash flood guidance:

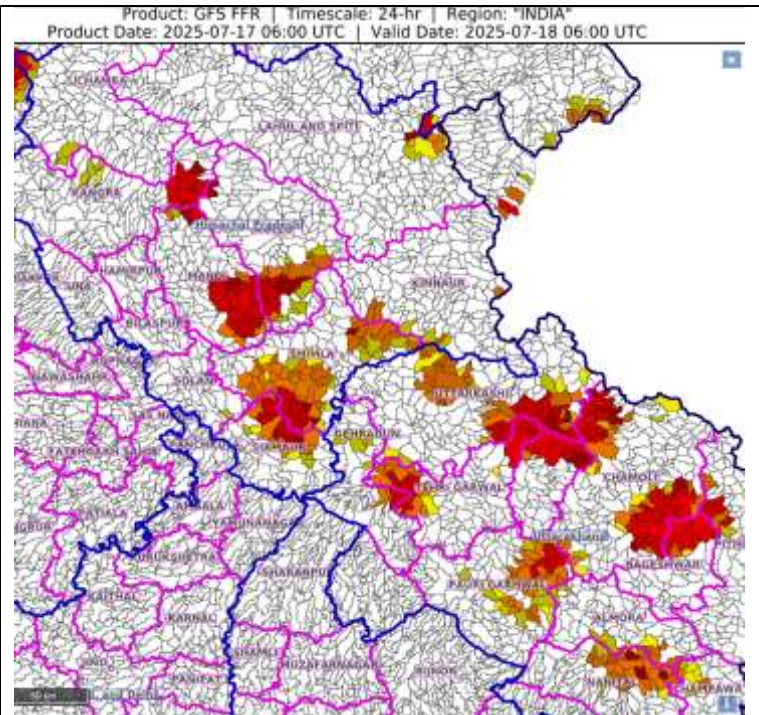
<p>24 hours Outlook for the Flash Flood Risk (FFR) till 1130 IST of 18-07-2025 :</p> <p>Moderate flash flood risk likely over few watersheds & neighbourhoods of following Met Sub-divisions during next 24 hours.</p> <p>East Uttar Pradesh - Banda and Fatehpur districts.</p> <p>West Uttar Pradesh - Hamirpur, Jalaun, Jhansi and Mahoba districts.</p> <p>East Madhya Pradesh - Chhatarpur, Damoh, Katni, Panna, Sagar, Satna and Tikamgarh districts.</p> <p>West Madhya Pradesh - Ashoknagar, Datia, Guna, Gwalior, Morena, Rajgarh, Sheopur, Shivpuri and Videsha districts.</p> <p>Surface runoff/ Inundation may occur at some fully saturated soils & low-lying areas over Area of Concern (AoC) as shown in map due to expected rainfall occurrence in next 24 hours.</p>	<p>Product: NCM FFR Timescale: 24-hr Region: "INDIA"</p> <p>Product Date: 2025-07-17 06:00 UTC Valid Date: 2025-07-18 06:00 UTC</p> 
<p>24 hours Outlook for the Flash Flood Risk (FFR) till 1130 IST of 18-07-2025 :</p> <p>Moderate flash flood risk likely over few watersheds & neighbourhoods of following Met Sub-divisions during next 24 hours.</p> <p>Coastal Karnataka - Dakshin Kannada and Udupi districts.</p> <p>Kerala & Mahe - Kannur, Kasargod, Kozikod, Mahe, Malappuram, Palakkad and Wayanad districts.</p> <p>Adjoining South Interior Karnataka - Chikmagalur, Hassan, Kodagu and Mysore districts.</p> <p>Adjoining Tamil Nadu - Puducherry & Karaikal - Nilgiri district.</p> <p>Surface runoff/ Inundation may occur at some fully saturated soils & low-lying areas over Area of Concern (AoC) as shown in map due to expected rainfall occurrence in next 24 hours.</p>	<p>Product: GFS FFR Timescale: 24-hr Region: "INDIA"</p> <p>Product Date: 2025-07-17 06:00 UTC Valid Date: 2025-07-18 06:00 UTC</p> 

24 hours Outlook for the Flash Flood Risk (FFR) till 1130 IST of 18-07-2025 :

Low to Moderate flash flood risk likely over few watersheds & neighbourhoods of following Met Sub-divisions during next 24 hours.

Himachal Pradesh - Chamba, Kangra, Kinnaur, Kullu, Lahul&Spiti, Mandi, Shimla, Sirmaur and Solan districts. Uttarakhand - Almora, Bageshwar, Chamoli, Champawat, Dehradun, Nanital, Pauri Garhwal, Pithoragarh, Rudraprayag, Tehri Garwal and Uttarkashi districts.

Surface runoff/ Inundation may occur at some fully saturated soils & low-lying areas over Area of Concern (AoC) as shown in map due to expected rainfall occurrence in next 24 hours.



Legends & abbreviations:

- ❖ **Heavy Rain:**64.5-115.5mm; **Very Heavy Rain:**115.6-204.4mm; **Extremely Heavy Rain:** >204.4mm.
- ❖ **Obsy:** Observatory; Automatic Weather Station; **ARG:** Automatic Rain Gauge; **dist:** District; **NH:** National Highway; **KVK:** Krishi Vigyan Kendra; **DVC:** Damodar Valley Corporation; **PTO:** Part Time Office, **Aero:** Aerodrome, **IAF:** Indian Air Force.
- ❖ **Region wise classification of meteorological Sub-Divisions:**
 - **Northwest India:** Western Himalayan Region (Jammu-Kashmir-Ladakh-Gilgit-Baltistan-Muzaffarabad, Himachal Pradesh and Uttarakhand); Punjab, Haryana-Chandigarh-Delhi; West Uttar Pradesh, East Uttar Pradesh, West Rajasthan and East Rajasthan.
 - **Central India:** West Madhya Pradesh, East Madhya Pradesh, Vidarbha and Chhattisgarh.
 - **East India:** Bihar, Jharkhand, Sub-Himalayan West Bengal & Sikkim; Gangetic West Bengal, Odisha and Andaman & Nicobar Islands.
 - **Northeast India:** Arunachal Pradesh, Assam & Meghalaya and Nagaland, Manipur, Mizoram & Tripura.
 - **West India:** Gujarat Region, Saurashtra & Kutch, Konkan & Goa, Madhya Maharashtra and Marathawada.
 - **South India:** Coastal Andhra Pradesh & Yanam, Telangana, Rayalaseema, Coastal Karnataka, North Interior Karnataka, South Interior Karnataka, Kerala & Mahe, Tamil Nadu, Puducherry & Karaikal and Lakshadweep.

LEGENDS

1. अंडमान और निकोबार द्वीपसमूह

2. अरुणाचल प्रदेश

3. असम और मेघालय

4. नागालैंड, मणिपुर, मिजोरम और त्रिपुरा

5. उप-हिमालयी पश्चिम बंगाल और सिक्किम

6. गंगीय पश्चिम बंगाल

7. ओडिशा

8. झारखंड

9. बिहार

10. पूर्वी उत्तर प्रदेश

11. पश्चिम उत्तर प्रदेश

12. उत्तराखंड

13. हरियाणा, चंडीगढ़ और दिल्ली

14. पंजाब

15. हिमाचल प्रदेश

16. जम्मू और कश्मीर और लद्दाख

17. पश्चिम राजस्थान

18. पूर्वी राजस्थान

19. पश्चिम मध्य प्रदेश

20. पूर्वी मध्य प्रदेश

21. गुजरात

22. सौराष्ट्र

23. कोंकण और गोवा

24. मध्य महाराष्ट्र

25. मराठवाड़ा

26. विदर्भ

27. छत्तीसगढ़

28. तटीय आंध्र प्रदेश और यनम

29. तेलंगाना

30. रायलसीमा

31. तमिलनाडु, पुडुचेरी और कराईकल

32. तटीय कर्नाटक

33. आंतरिक उत्तरी कर्नाटक

34. आंतरिक दक्षिणी कर्नाटक

35. केरल और माहे

36. लक्षद्वीप



1. Andaman & Nicobar Islands

2. Arunachal Pradesh

3. Assam & Meghalaya

4. Nagaland, Manipur, Mizoram & Tripura

5. Sub-Himalayan West Bengal & Sikkim

6. Gangetic West Bengal

7. Odisha

8. Jharkhand

9. Bihar

10. East Uttar Pradesh

11. West Uttar Pradesh

12. Uttarakhand

13. Haryana, Chandigarh & Delhi

14. Punjab

15. Himachal Pradesh

16. Jammu & Kashmir and Ladakh

17. West Rajasthan

18. East Rajasthan

19. West Madhya Pradesh

20. East Madhya Pradesh

21. Gujarat

22. Saurashtra

23. Konkan & Goa

24. Madhya Maharashtra

25. Marathwada

26. Vidarbha

27. Chhattisgarh

28. Coastal Andhra Pradesh & Yanam

29. Telangana

30. Rayalaseema

31. Tamilnadu, Puducherry & Karaikal

32. Coastal Karnataka

33. North Interior Karnataka

34. South Interior Karnataka

35. Kerala & Mahe

36. Lakshadweep

SPATIAL DISTRIBUTION (% of Stations reporting)

% Stations	Category	% Stations	Category
76-100	Widespread (WS/Most Places)	26-50	Scattered (SCT/A Few Places)
51-75	Fairly Widespread (FWS/Many Places)	1-25	Isolated (ISOL)



Fog



Heavy Snow



Cold Wave



Heavy Rain



Dust Storm



Cold Day



Very Heavy Rain



Heat Wave



Ground Frost



Extremely Heavy Rain



Warm Night



Thunder & Lightning



Hot Day



Hailstorm



Hot & Humid



Dust Raising Winds



Strong Surface Winds

COLOUR CODED WARNING

No Warning (No Action)

Watch (Be Aware)

Alert (Be Prepared To Take Action)

Warning (Take Action)

Probabilistic Forecast

Terms	Probability of Occurrence (%)
Unlikely	< 25
Likely	25 - 50
Very Likely	50 - 75
Most Likely	> 75

* Red colour warning does not mean "Red Alert", Red colour warning means "Take Action".

Forecast and Warning for any day is valid from 0830 hours IST of day till 0830 hours IST of next day.

For more details, kindly visit <https://mausam.imd.gov.in> or contact: 011-2434-4599

(Service to the Nation since 1875)

DEFINITION/CRITERIA

Rain/ Snow *

Heavy: 64.5 to 115.5 mm/cm *
Very Heavy: 115.6 to 204.4 mm/cm *
Extremely Heavy: > 204.4 mm/cm *

Heat Wave

When maximum temperature of a station reaches $\geq 40^{\circ}\text{C}$ for plains and $\geq 30^{\circ}\text{C}$ for hilly regions
(a) Based on Departure from normal

Heat Wave: Maximum Temperature Departure from normal 4.5°C to 6.4°C .

Severe Heat Wave: Maximum Temperature Departure from normal $\geq 6.5^{\circ}\text{C}$

(b). Based on Actual maximum temperature

Heat Wave: When actual maximum temperature $\geq 45^{\circ}\text{C}$.

Severe Heat Wave: When actual maximum temperature $\geq 47^{\circ}\text{C}$.

(c). Criteria for heat wave for coastal stations

When maximum temperature departure is $> 4.5^{\circ}\text{C}$ from normal. Heat Wave may be described provided maximum temperature $\geq 37^{\circ}\text{C}$.

Warm Night

When maximum temperature remains 40°C

Warm Night: When minimum temperature departure 4.5°C to 6.4°C .

Severe Warm Night: When minimum temperature departure $> 6.4^{\circ}\text{C}$.

Cold Wave

When minimum temperature of a station $\leq 10^{\circ}\text{C}$ for plains and $\leq 0^{\circ}\text{C}$ for hilly regions.

(a). Based on departure

Cold Wave: Minimum Temperature Departure from normal -4.5°C to -6.4°C .

Severe Cold Wave: Minimum Temperature Departure from normal $\leq -6.5^{\circ}\text{C}$

(b) Based on actual Minimum Temperature (for Plains only)

Cold Wave: When Minimum Temperature is $\leq 4.0^{\circ}\text{C}$

Severe Cold Wave: When Minimum Temperature is $\leq 2.0^{\circ}\text{C}$

(c) For Coastal Stations

When Minimum Temperature departure is $\leq -4.5^{\circ}\text{C}$ & actual Minimum Temperature is $\leq 15^{\circ}\text{C}$

Cold Day

When minimum temperature of a station $\leq 10^{\circ}\text{C}$ for plains and $\leq 0^{\circ}\text{C}$ for hilly regions

Based on departure

Cold Day: Maximum Temperature Departure from normal -4.5°C to -6.4°C .

Severe Cold Day: Maximum Temperature Departure from normal $\leq -6.5^{\circ}\text{C}$

Fog

Phenomenon of small droplets suspended in air and the horizontal visibility $< 1\text{km}$

Moderate Fog: When the visibility between 500-200 metres

Dense Fog: when the visibility between 50- 200 metres

Very Dense Fog: when the visibility < 50 metres

Thunderstorm

Sudden electrical discharges manifested by a flash of light (Lightning) and a sharp rumbling sound (thunder)

Dust/Sand Storm

An ensemble of particles of dust or sand energetically lifted to great heights by a strong and turbulent wind.

Frost

Ice deposits on ground

Air temperature $\leq 4^{\circ}\text{C}$ (over Plains)

Squall

A strong wind that rises suddenly, lasts for atleast 1 minute.

Moderate: Wind speed 52-61 kmph

Severe: Wind speed 62-67 kmph

Very Severe: Wind speed > 67 kmph

Sea State

Effect of various waves in the sea over specific area

Rough to very rough: Wind speed 41-62 kmph (22-33 knots) & Wave height 2.5-6 metre

High to very high: Wind speed 63-117 kmph (34-63 knots) & Wave height 6-14 metre

Phenomenal: Wind speed > 117 kmph (> 63 knots) & Wave height > 14 metre

Cyclone

Cyclonic Storm: Wind speed 62-87 kmph (34-47 knots)

Severe Cyclonic Storm: Wind speed 88-117 kmph (48-63 knots)

Very Severe Cyclonic Storm: Wind speed 118-165 kmph (64 - 89 knots)

Extremely Severe Cyclonic Storm: Wind speed 166-220 kmph (90 -119 knots)

Super Cyclone Storm: Wind speed > 220 kmph (> 119 knots)

* Red colour warning does not mean "Red Alert", Red colour warning means "Take Action".

Forecast and Warning for any day is valid from 0830 hours IST of day till 0830 hours IST of next day.

For more details, kindly visit <https://mausam.imd.gov.in> or contact: 011-2434-4599

(Service to the Nation since 1875)

Hot and Humid: When maximum temperatures remain 3°C above normal along with the above normal relative humidity.